

COMMERCIAL & INDUSTRIAL LAND

FOR SALE - \$3,975,000 (\$1.50 psf)

Property Details

Size: 60.82 acres divisible

City/County:
Greeley/Weld

Zoning:
High Intensity
Commercial & Medium
Intensity Industrial

Utilities:
All utilities in public
R-O-W adjacent to
property

Runway Access:
Potential for "through
the fence" runway access
to Greeley-Weld County
Airport

Contact Information

Ron Webert
720.264.3489
rwebert@bitzerrep.com

John Bitzer
720.264.3483
jbitzer@bitzerrep.com



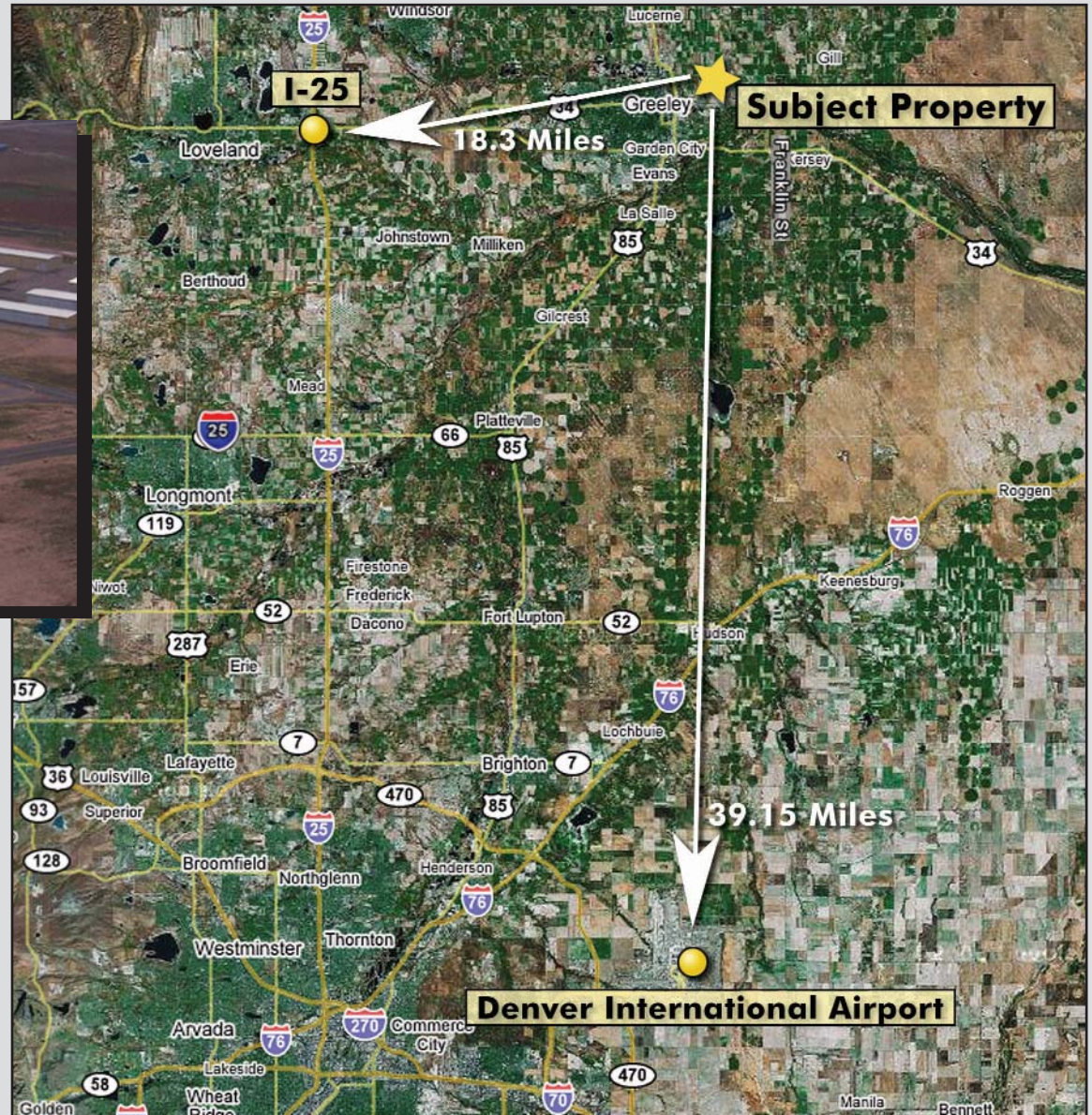
**2139 East 8th Street
Greeley, Colorado**

Bitzer Real Estate Partners
1610 Wynkoop Street, Suite 450, Denver, Colorado 80202
Phone: 303.296.8500 | Fax: 303.296.8501 | www.bitzerrep.com

CORFAC
International

BITZER
REAL ESTATE PARTNERS

2139 East 8th Street Greeley, Colorado



Property Details

Site Size: 60.82 Acres

Water: Adjudicated ground water rights and 4 shares of the New Cache la Poudre Irrigation Co.

Greeley – Weld County Airport

The airport is located 40 miles north of Denver, but outside of the Denver Class B Airspace. It is perfectly positioned to service the needs of all general and business aviation users. It is capable of accepting aircraft in size and weight categories exceeding that published in the Airport Facilities Directory, including certain aircraft in the Airplane Design Group III category with prior approval from airport management.

Contact: Ron Webert 720.264.3489
John Bitzer 720.264.3483