

OFFICE SPACE FOR SUBLEASE

Property Details

Size: 9,587 RSF

Rental Rate: Negotiable

Expenses: \$10.81/SF

Sublease Term:
Through 5/30/2017

Parking: 4.5/1,000 RSF
Free Surface

**Existing Medical Space
Built Out as an Imaging
Center**

**New Class A Office
Building**

**First Floor Space with
Lobby Identity**

**Great access to C-470
via Bowles Ave.**

Contact Information

JR Bitzer
720.264.3490
jrbitzer@bitzerrep.com

Bryan Fry
720.264.3497
bfry@bitzerrep.com



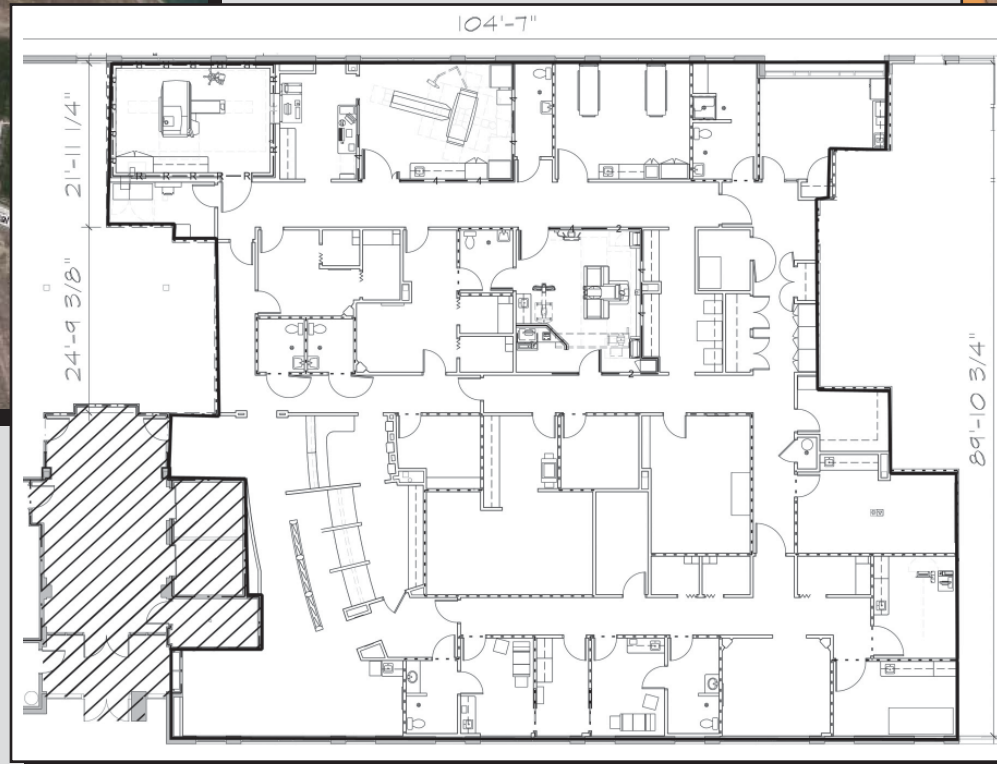
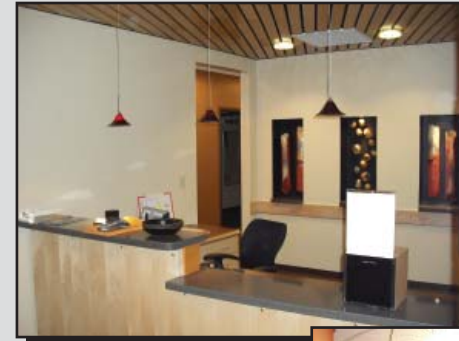
**13402 W. Coal Mine Avenue, Suite 100
Littleton, Colorado 80127**

Bitzer Real Estate Partners
1610 Wynkoop Street, Suite 450, Denver, Colorado 80202
Phone: 303.296.8500 | Fax: 303.296.8501 | www.bitzerrep.com

CORFAC
International

BITZER
REAL ESTATE PARTNERS

13402 W. Coal Mine Avenue, Suite 100 Littleton, Colorado 80127



Contact: JR Bitzer 720.264.3490 or Bryan Fry 720.264.3497