

SIGNATURE OFFICE BUILDING FOR SALE OR LEASE



Building Details

Building Size: 55,706 SF

Site Size: 2.45 Acres

YOC: 1982

Parking: 187 Spaces

Immediate Occupancy

- **Available for Sale**
- **Available for Lease**
- **Walking distance to Lightrail**
- **Adjacent to Vallagio at Inverness**
- **Overlooks the Inverness golf course**
- **Lockers/showers**
- **Cafeteria**

Contact Information

JR Bitzer

720.264.3490

jrbitzer@bitzerrep.com



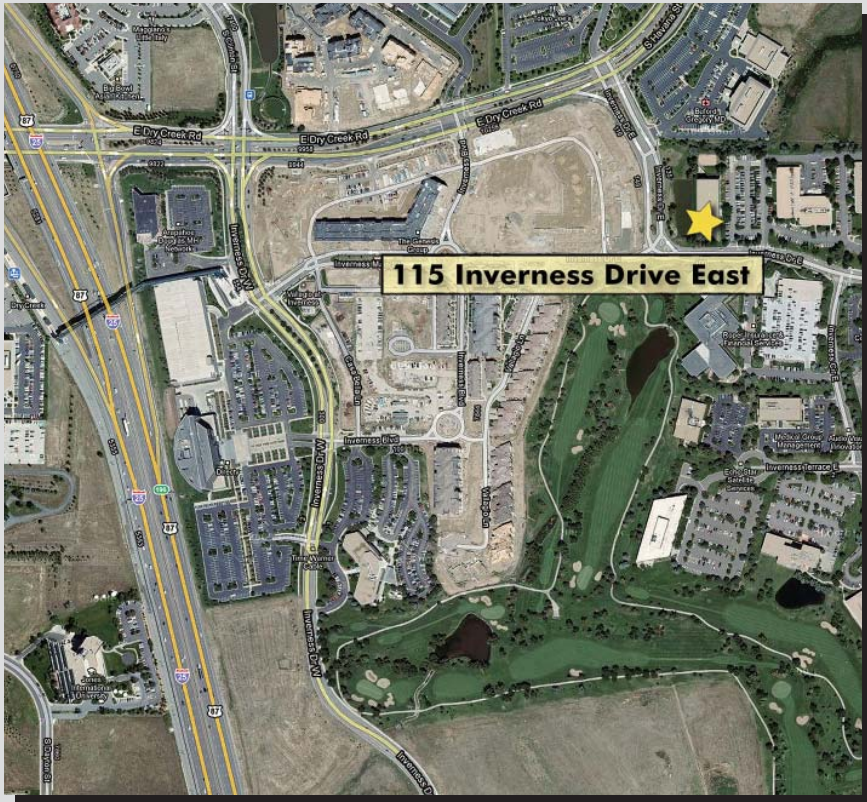
**115 Inverness Drive East
Englewood, Colorado 80112**

Bitzer Real Estate Partners
1610 Wynkoop Street, Suite 450, Denver, Colorado 80202
Phone: 303.296.8500 | Fax: 303.296.8501 | www.bitzerrep.com

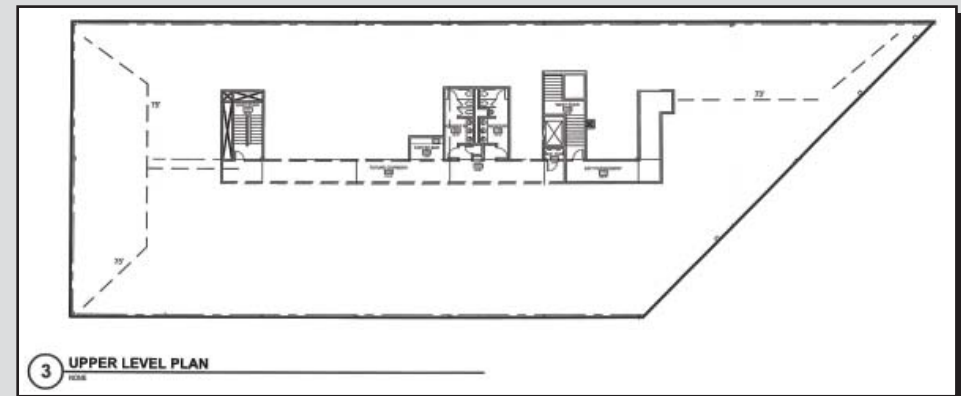
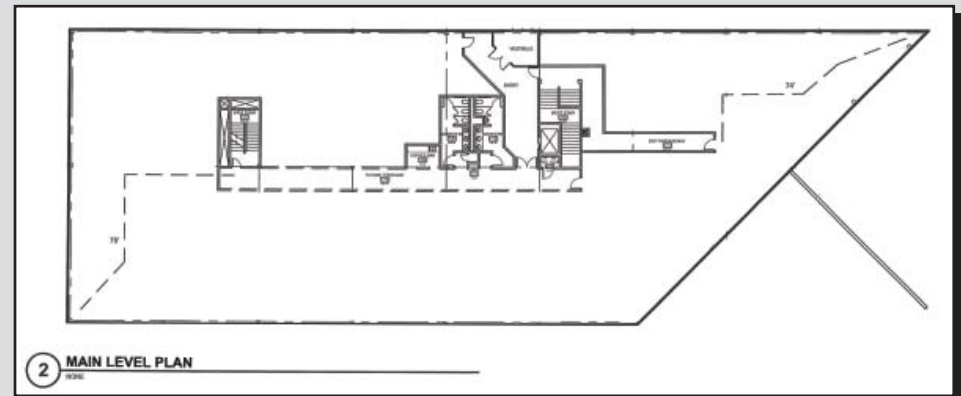
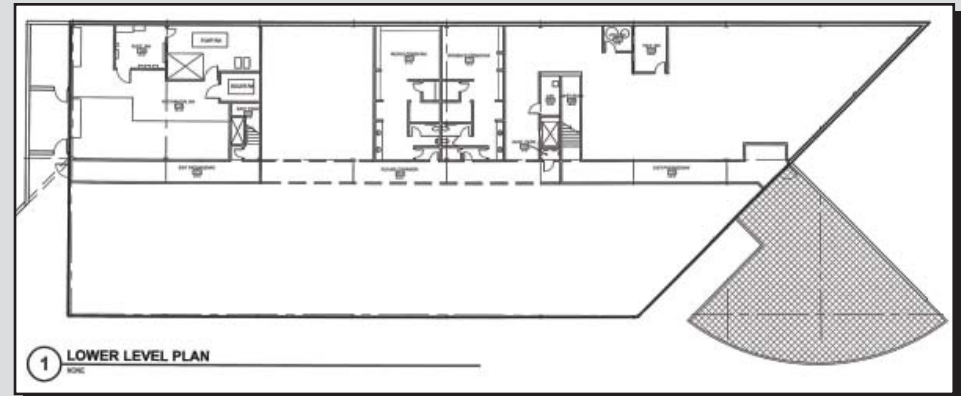
CORFAC
International

BITZER
REAL ESTATE PARTNERS

115 Inverness Drive East Englewood, Colorado 80112



This three story quality office building is located at the north entrance of the prestigious Inverness Business Park. It overlooks the 5th tee of the Inverness golf course in a beautifully landscaped setting with a pond and on-site volleyball court and patio. It is easily accessible one half mile off the Dry Creek Road interchange of I-25 which also includes a light rail stop for the E, F & G lines. The 55,706/ SF building is ideal for the single user owner or tenant seeking a first class image in an AAA location.



Contact: JR Bitzer 720.264.3490